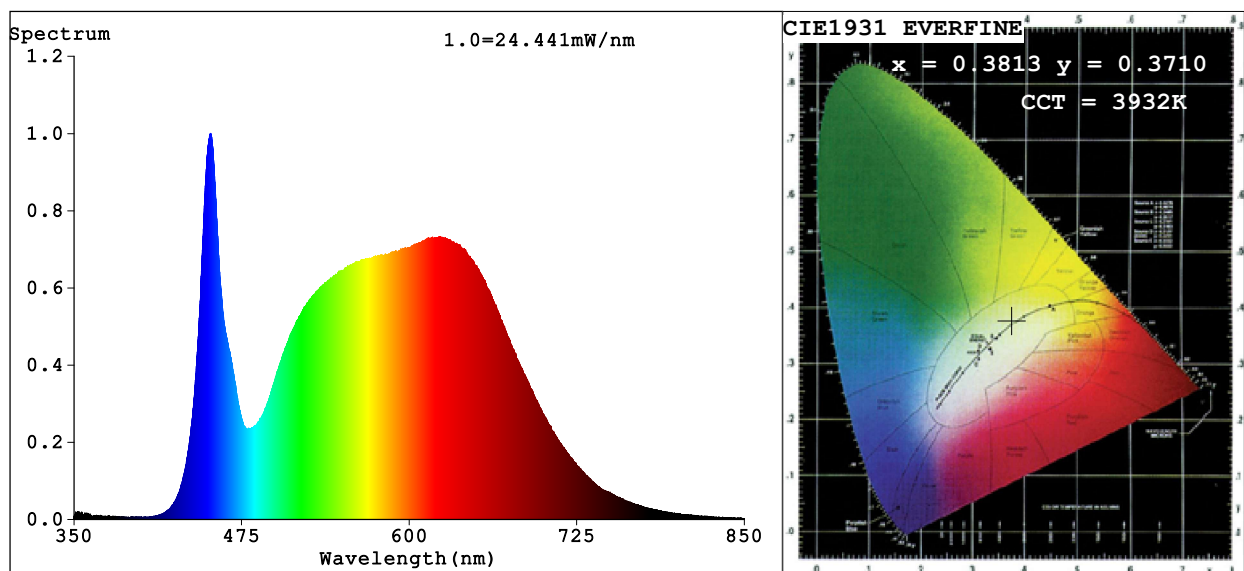


Spectrum Test Report



Color Parameters:

Chromaticity Coordinate: $x=0.3813$ $y=0.3710$ $u'=0.2280$ $v'=0.4992$

CCT=3932K (Duv=-0.0030) Dominant WL:Ld =581.1nm Purity=25.8%

Ratio:R=20.0% G=76.3% B=3.7%; Peak WL:Lp=451.9nm FWHM=19.2nm

Render Index:Ra=92.1 CRI=88.6 TM30:Rf=89 Rg=102

R1 =93 R2 =94 R3 =92 R4 =92 R5 =92 R6 =89 R7 =95

R8 =90 R9 =74 R10=84 R11=91 R12=67 R13=93 R14=95 R15=93

Photo Parameters:

Flux = 1106 lm Eff. : 68.56 lm/W Fe = 3.916 W

Electrical parameters:

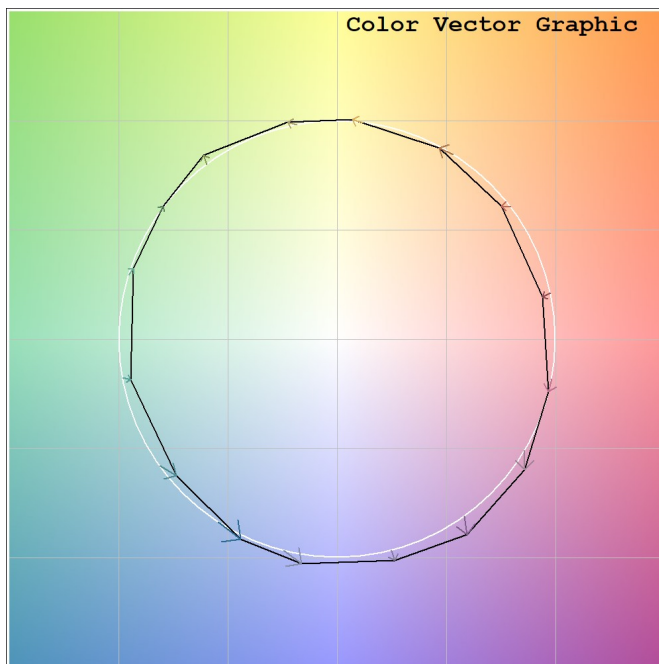
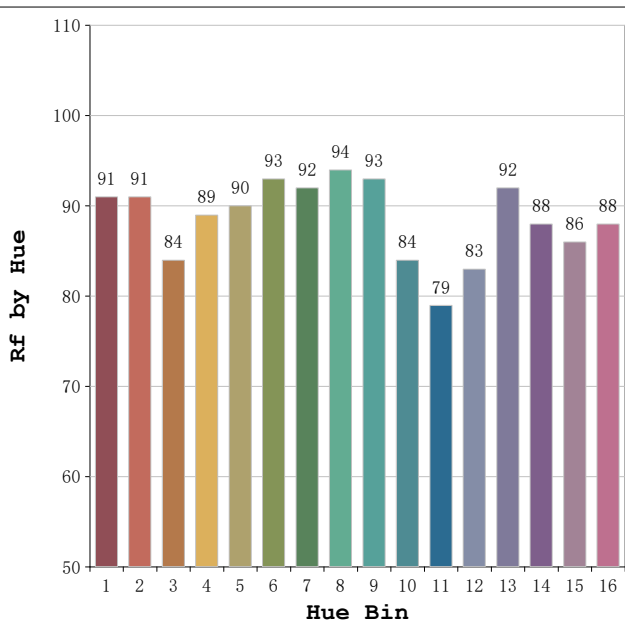
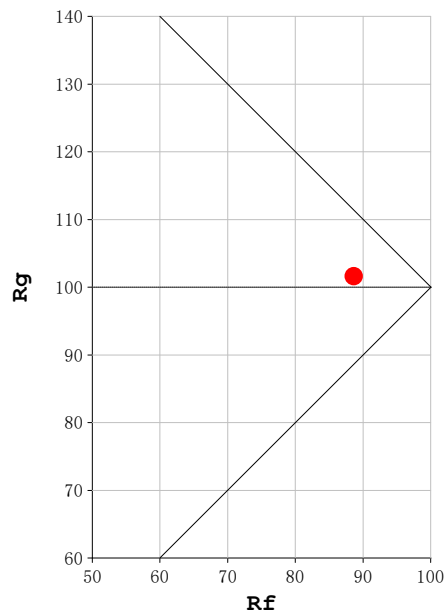
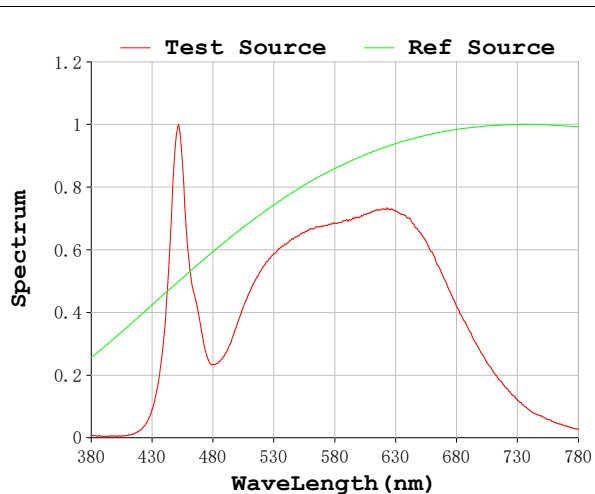
V = 23.998 V I = 0.6722 A P = 16.13 W PF = 1.000

Status: Integral T = 1000 ms Ip = 34852 (53%)

Model:Ecoled Neón 3D plus 4000K
 Tester:Sercio Carenros
 Temperature:25Deg
 Manufacturer:Luz Negra S.L

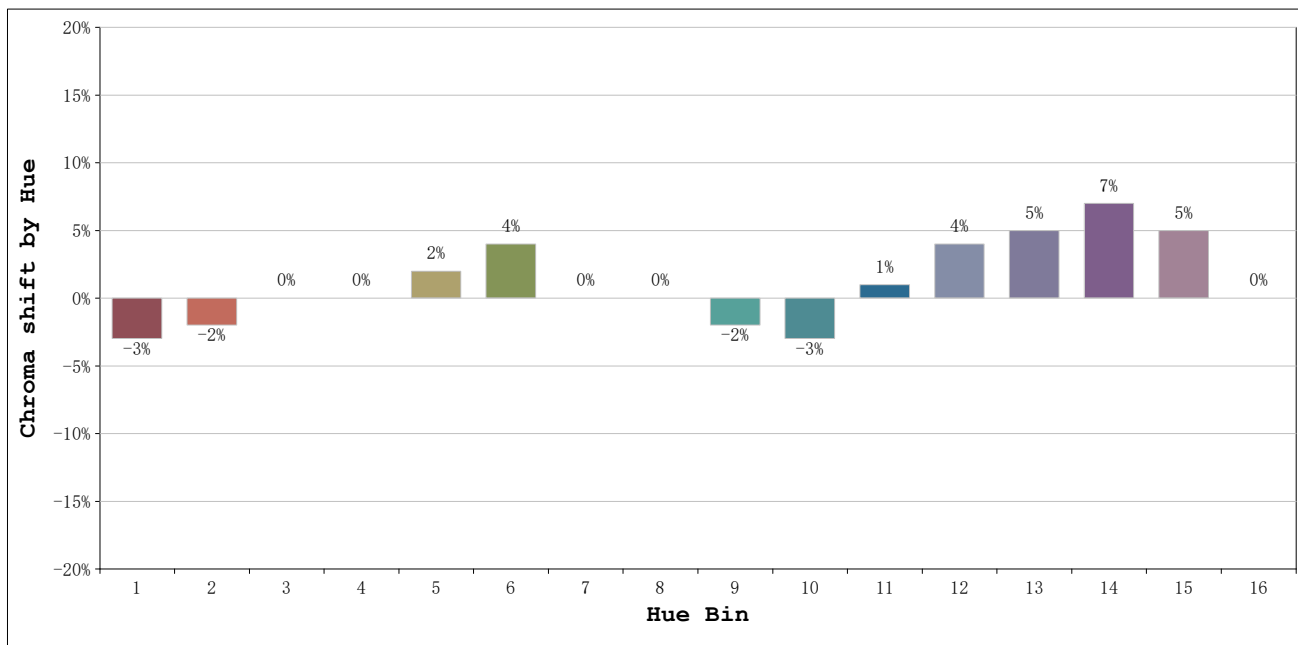
Number: 10.317
 Date:2025-09-01 15:09:34
 Humidity:51%
 Remarks:100cm de neón

Rf: 89 **CCT: 3932 K** **u': 0.2280**
Rg: 102 **Duv: -0.0030** **v': 0.4992**



Model:Ecoled Neón 3D plus 4000K
 Tester:Sercio Carenros
 Temperature:25Deg
 Manufacturer:Luz Negra S.L

Number: 10.317
 Date:2025-09-01 15:09:34
 Humidity:51%
 Remarks:100cm de neón



			Graphic shift(%)	
Hue Bin	Hue Angle	Rf	Chroma	Hue
1	0.0° - 22.5°	91	-3	0
2	22.5° - 45.0°	91	-2	3
3	45.0° - 67.5°	84	0	7
4	67.5° - 90.0°	89	0	5
5	90.0° - 112.5°	90	2	4
6	112.5° - 135.0°	93	4	0
7	135.0° - 157.5°	92	0	-3
8	157.5° - 180.0°	94	0	-2
9	180.0° - 202.5°	93	-2	2
10	202.5° - 225.0°	84	-3	8
11	225.0° - 247.5°	79	1	13
12	247.5° - 270.0°	83	4	9
13	270.0° - 292.5°	92	5	1
14	292.5° - 315.0°	88	7	-3
15	315.0° - 337.5°	86	5	-6
16	337.5° - 360.0°	88	0	-5

Model:Ecoled Neón 3D plus 4000K
 Tester:Sercio Carenros
 Temperature:25Deg
 Manufacturer:Luz Negra S.L

Number: 10.317
 Date:2025-09-01 15:09:34
 Humidity:51%
 Remarks:100cm de neón